



SIR JOHN
SOANE'S
MUSEUM
LONDON

Venue Hire

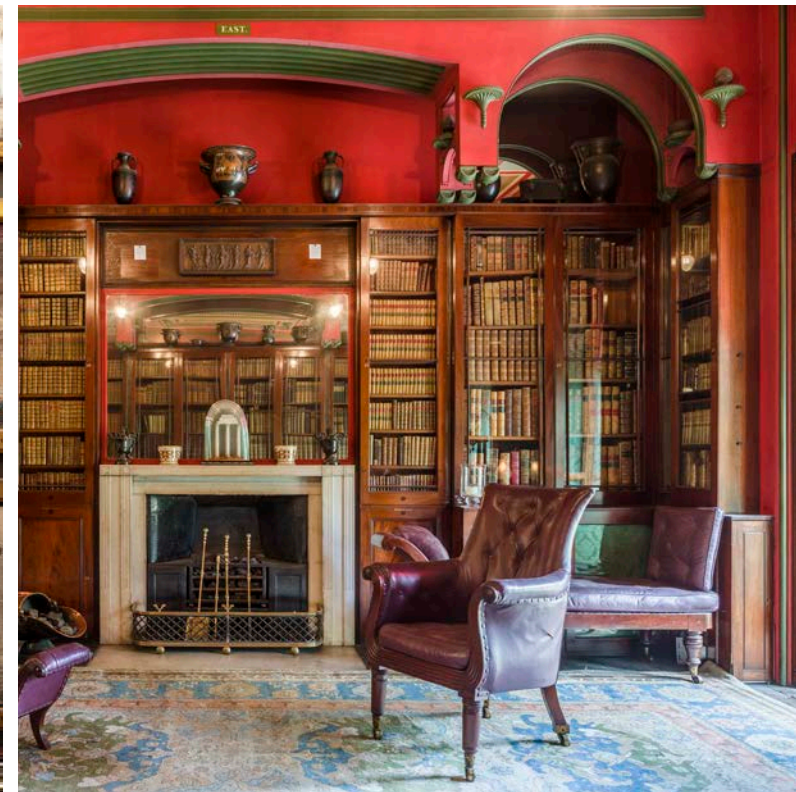
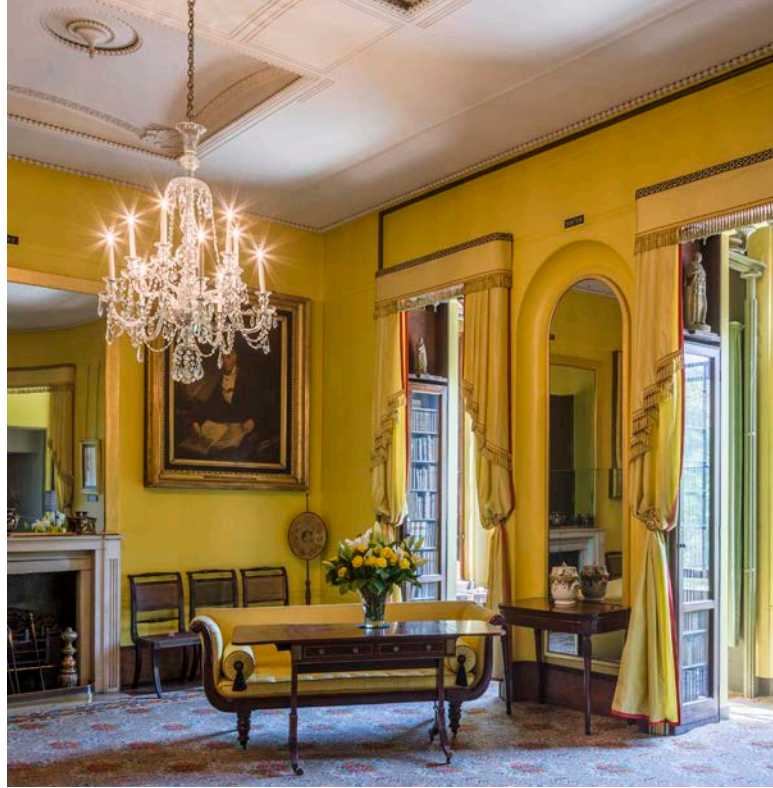


An Extraordinary House Museum

The Museum was designed and curated by Sir John Soane (1753-1837), one of Britain's greatest architects. Known for its whimsical and personal interiors, every aspect of the Museum reflects Soane's architectural ingenuity, imagination, innovation and artistic taste.

Soane's collections – Greco-Roman marbles, architectural fragments, plaster casts, paintings, sculptures, and priceless furniture – are still arranged today as they were at the time of his death in 1837, as decreed by an Act of Parliament.

We invite you to continue the tradition of entertaining at the Museum, in the same rooms where Soane himself hosted the great and the good of Regency society. By doing so, you support the care and conservation of this amazing Grade I listed house and its world-class collection.





Exclusive Dinners

Treat your guests to an intimate dining experience in this Regency townhouse frozen in time. The many mirrors of Soane's elegant Library-Dining Room bathe the room and its antiques in candlelight and create a wonderfully atmospheric setting for exclusive events.

Dinners include the elegant first floor Drawing Rooms for pre-dinner drinks, a private candlelit tour of the Museum led by an expert member of staff, and the atmospheric Library-Dining Room for dinner.

Dinners are for up to 30 guests and run from 7pm to 11pm.



The hire fee is £6000+VAT.

Catering and floristry costs are not included and should be obtained from our approved suppliers.

Exclusive Dinners are available every day except for Mondays.

Receptions and Private Views

Enjoy a private evening view of the museum with your select friends, family, or colleagues. Drinks and canapés are served in the Library-Dining Room or the yellow Drawing Rooms.

Once guests have drinks in hand, an expert member of staff will provide an introduction to Soane and his eccentric house before guests are invited to explore the ground and first floors of the candlelit museum at their leisure. Our famous Picture Room, with over 100 works by artists such as Canaletto, Hogarth, and Turner, is also included.

Receptions are for up to 80 guests and take place between 6:30pm and 9:30pm.

The hire fee is £5500+VAT.

Catering and floristry costs are not included and should be obtained from our approved suppliers.

Receptions and Private Views are available every day except for Mondays.



Candlelit Tours

Explore the Museum's marvellous collections and preserved interiors at their most atmospheric as our expert guides bring the history of the building to life through an intimate one-hour tour by candlelight.

Guests are welcomed with a half-hour prosecco and white wine reception in the Library-Dining Room, before embarking on our traditional tour. Guests arrive from 6:00pm and depart at 7:30pm. Charged at £1500+VAT for up to 15 people with additional guests charged at £70+VAT per person for up to 30 people. Candlelit Tours are available every day except for Mondays.



Why not add?

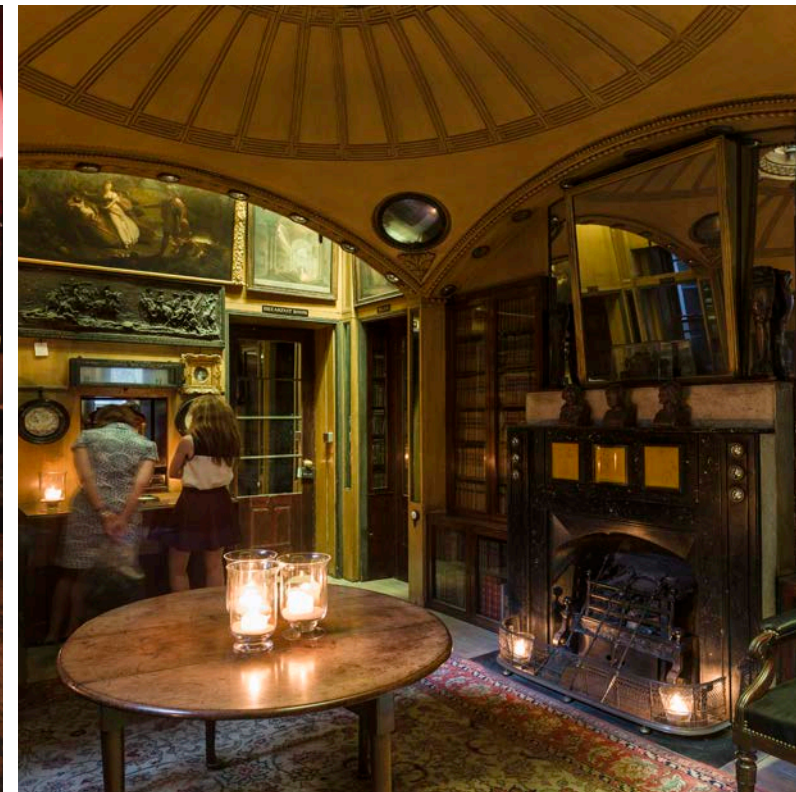
Ruinart Champagne

+£500+VAT for up to 15 people with additional guests charged at £80+VAT per person.

Enjoy Soane's favourite champagne.

Canapés

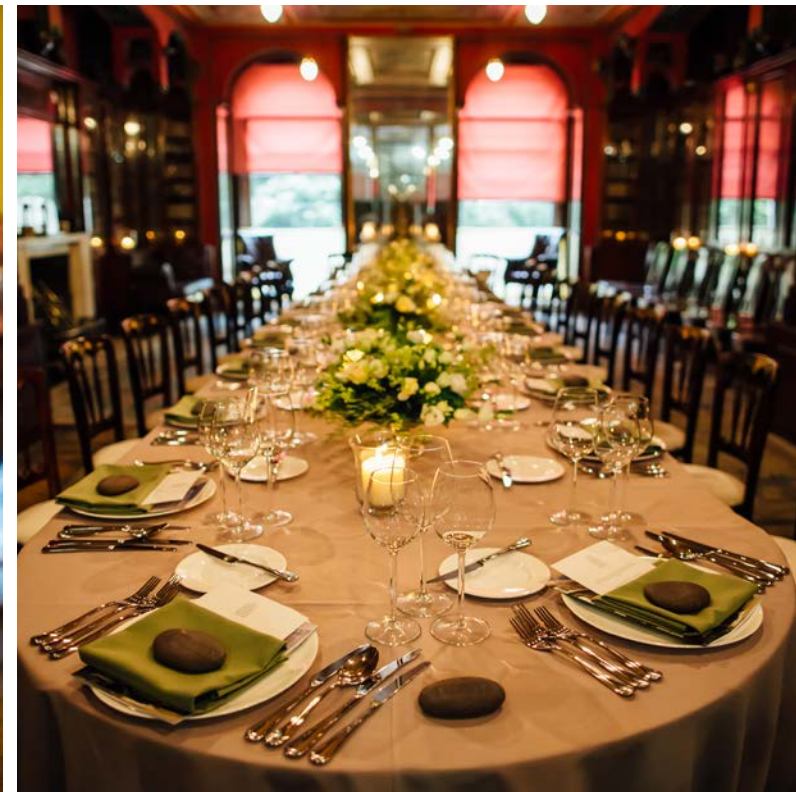
+£1000+VAT for up to 15 people with additional guests charged at £30+VAT per person.



Wedding Receptions

For a couple with an architectural eye, Sir John Soane's Museum offers a truly intimate and unforgettable interior in which to celebrate 'I do.'

Our packages and capacities for wedding receptions, breakfasts, and lunches are the same for our other events, but we are always happy to discuss details that will make your special day uniquely you.



"Sir John Soane's Museum was the perfect venue, and it wouldn't have been possible for us to have our dream wedding without everyone at the Museum - all our guests had an amazing time."

- Newlyweds



Approved Suppliers: Caterers

Our approved caterers are all of an excellent standard and are familiar working in our delicate, Grade-I listed museum. They would be pleased to provide initial quotes.

Alexander & Björck

020 3457 1700

parties@alexanderandbjorck.com

www.alexanderandbjorck.com

Alison Price

020 7840 7640

enquiries@alisonprice.co.uk

www.alisonprice.co.uk

By Word Of Mouth

020 8871 9566

office@bywordofmouth.co.uk

www.bywordofmouth.co.uk

Clerkenwell Green

07792 408095

hello@clerkenwellgreen.com

www.clerkenwellgreen.com

Zafferano

020 8905 9120

info@zafferano.co.uk

www.zafferano.co.uk



Approved Suppliers: Florists

Our approved florists have a long relationship with us and are accomplished at making events in our unique venue extra special. They would be pleased to provide initial quotes.



Lavender Green

020 7127 5305
info@lavendergreen.co.uk
www.lavendergreen.co.uk

Pinstripes & Peonies

020 7720 1245
flowers@pinstripesandpeonies.com
www.pinstripesandpeonies.com

Wildabout

020 7404 2541
info@wildabout.co.uk
www.wildabout.co.uk





Bespoke Hire

If you're looking to host an event which is not already listed in the brochure, such as a book launch, brand activation, private lecture, or product launch, please do get in touch. We'd be more than happy to provide a quote based on your needs. The Library-Dining Room and first floor Drawing Rooms are perfect for free-flow, networking events whilst our Seminar Room is a flexible space ideal for meetings, seminars, and away days.





Seminar Room Hire

Our Seminar Room on the ground floor of No. 14 is perfect for small board meetings, presentations, away days, and seminars. The room is flooded with natural light with large windows looking out to the green space of Lincoln's Inn Fields.

Venue Hire includes a screen, projector, and flipchart, a private entrance, and a dedicated staff member.

The room can accommodate up to 30 people theatre-style or 16 people in a boardroom layout.

Full day | 9:30am-4:30pm
£700+VAT

Half day | 9am-1pm or 1pm-4pm
£400+VAT

Evening | 2 hours, usually 6pm-8pm
£500+VAT, £100+VAT for every additional hour

Tea and coffee
+£3.50 per person

Seminar Room Hire is available every day.

Contact Us

We are conveniently situated in the historic Lincoln's Inn Fields, London's largest public square in the heart of the city - a short walking distance from Holborn, Chancery Lane, and Temple tube stations.

Please get in touch for further information about tours and events at the Museum or if you have any questions.

Image credits: Lewis Bush, Matt Chung, Victoria Dawe, Gareth Gardner, Harvey Nichols, Stefan Jakubowski, Derry Moore, Chi Onuora, Celia Rogge, Tom Ryley, John Stead, and Topshop Unique.

Images reproduced by kind permission of the Trustees of Sir John Soane's Museum, London. All rights reserved.

Sir John Soane's Museum
13 Lincoln's Inn Fields
London WC2A 3BP

Email: events@soane.org.uk
Tel: +44 (0)20 7440 4279





MUSEUM
OF THE
CITY OF
NEW YORK
AND
COUNTY OF
MAYORS
OFFICE
100
NASSAU ST
NEW YORK, NY 10038

1741